

AMMO101 | SHOTSHELL

HOW IT WORKS

- 1 As the trigger is pulled, the primer is struck, creating a mini explosion, that ignites the powder.
- 2 Gas generated from the burning powder rapidly expands in the cartridge, forcing the shot out of the cartridge and down the barrel.
- 3 Shot leaves the barrel as a small, tight group of projectiles and disperses into a wider "pattern" as it travels farther downrange.

THE PRIMER

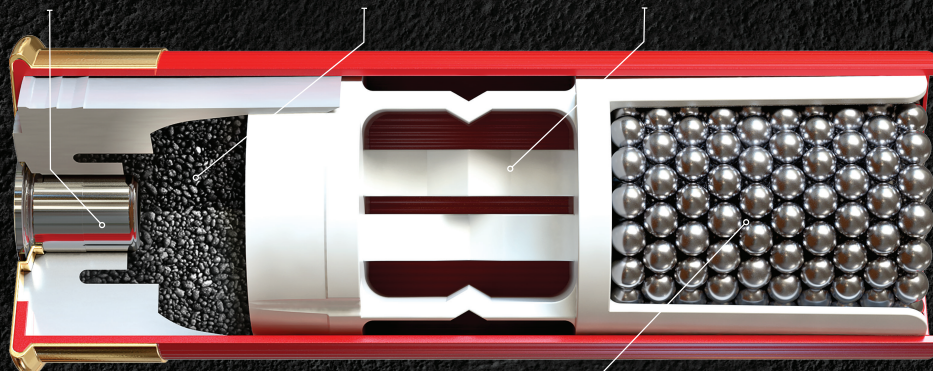
The primer is responsible for igniting the powder - a high quality primer ensures reliability and consistency shot after shot.

THE POWDER

Smokeless powder is a type of propellant that burns cleaner and more consistently, resulting in less fouling in the barrel.

THE WAD

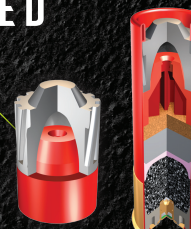
A wad is the part, usually plastic, that separates the powder from the shot or slug. It properly seals the expanding gases during ignition for consistent performance, and provides a barrier between the shot and the barrel while shot is traveling down the barrel.



SHOOT
UNITED

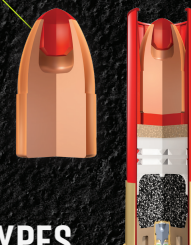
SMOOTHBORE SLUGS

Smooth bore slugs are designed to hunt medium-large game at short ranges by firing a single large projectile.



RIFLED BARREL SLUGS

Sabot slugs are High Performance projectiles designed to be fired in a rifled barrel and are used for medium to large game. These offer greater accuracy and penetration for medium range shots.



COMMON USES



PERSONAL DEFENSE

Increasingly, shotgun owners are buying ammunition with special technology, specifically designed for personal defense.



TARGET SHOOTING

Clay target shooting is popular all over the world and is accessible to everyone from weekend recreational shooters to Olympic athletes and competition shooters.



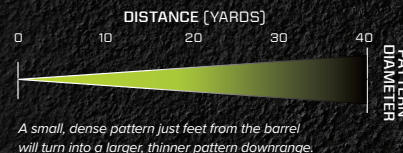
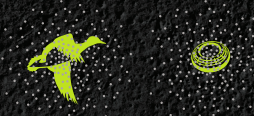
HUNTING

Shotshells are extremely popular for hunting and used on a large variety of game, from larger game like deer and turkey to smaller game like dove, quail and everything in between.*

*Always consult your local hunting regulations before going afield.

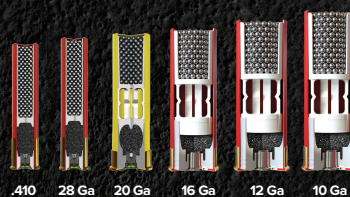
THE SHOT

Rather than a single bullet, shotshells contain hundreds of pellets, known as "shot." Designed to shoot at fast-flying clay targets and small game like dove, quail and pheasant, this multitude of projectiles improves the odds of the shooter hitting a moving target.



GAUGES

Shotgun gauges are determined by the inside diameter of the barrel they're shot from. These sizes range from as small as .410 Bore to 10 Gauge.



*Cartridges are not shown in actual size

SHOT SIZES

STANDARD SHOT SIZES															
DENSITY	9	8.5	8	7.5	7	6	5	4	3	2	1	B	BB	BBB	
Shot Number	9	8.5	8	7.5	7	6	5	4 <td>3</td> <td>2</td> <td>1</td> <td>B</td> <td>BB</td> <td>BBB</td>	3	2	1	B	BB	BBB	
Diameter in Inches	.08	.085	.09	.095	.10	.11	.12	.13	.14	.15	.16	.17	.18	.19	
Pellets/Oz. Steel	7.9"			577	490	420	314	243	191	153	125	103		72 61	
Pellets/Oz. Lead	11.0"	585	500	410	350	300	225	170	135		87			50	
Pellets/Oz. Bismuth	9.7"							194	155		83				
															
BUCKSHOT SIZES															
DENSITY	4	3	1	0	00	000									
Shot Number	4	3	1	0	00	000									
Diameter in Inches	.24	.25	.30	.32	.33	.36									
# Pellets Typical Load	27, 34, 41	20	16, 24	12	9, 12, 15, 18	8, 10									

SHOT TYPES

- Lead**
Economical, used for target shooting and small game hunting. This shot may also be plated with copper to improve performance in magnum hunting and premium target loads.
- Steel**
Used for waterfowl hunting and other uses like target shooting and small game hunting when the use of lead-free shot is required.
- Bismuth**
Used in high-performance waterfowl and hunting loads.



Shoot United™ is a resource for millions of people who may have never been exposed to firearm ownership as well as those who have recently purchased a gun. It's where people can learn, build confidence and find ways to participate. We invite you to learn more about the shooting sports at ShootUnited.com.